

CAVENDER

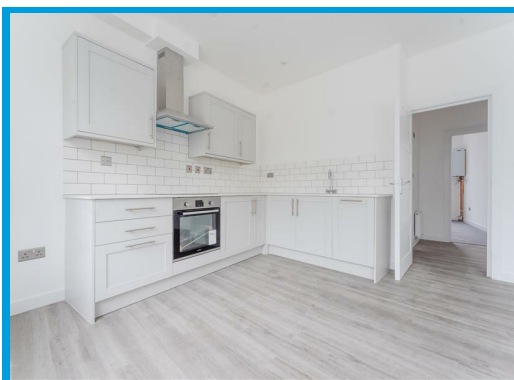
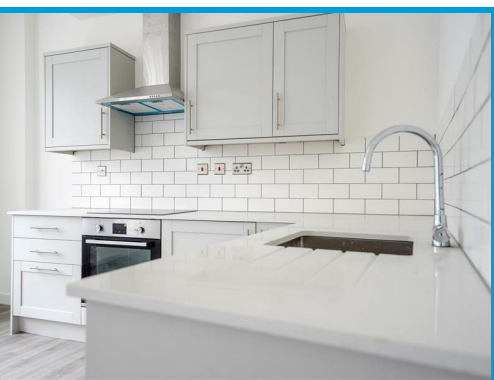
ESTATE AGENT



Epsom Road, Guildford, Surrey GU1 3JT

£1,550 PCM

Located in the heart of Guildford town centre, this stunning two bedroom apartment offers well presented accommodation with the benefit of an allocated parking space.



Description

Having been recently redecorated throughout, this well presented two bedroom apartment boasts spacious accommodation within moments of Guildford High Street.

Features include a large lounge, two double bedrooms and a modern kitchen and bathroom.

The property further boasts an allocated parking space.

